

*Ihagee*

## IHAGEE (JR), 1933 - #413629



I had one (bought from David Woodford, at those times he was my contact at Jessop's, London). I did not know which version it was. Stein Falchenberg wrote me... You can read more information about this very rare camera on the following pages where you can find the survived ones (found through internet).

Later I found the one I own:  
Body number 413629  
The camera is in very fine condition. Works.



Ne avevo una, acquistata da David Woodford che allora lavorava da Jessop, a Londra. Non ne sapevo nulla. Stein Falchenberg mi scrisse... Potete trovare ulteriori informazioni su questa rarissima macchina nelle pagine seguenti dove potete trovare anche le altre sopravvissute (trovate per mezzo di internet).

Più tardi trovai questa:  
Body number 413629  
La macchina è in grandi condizioni. Funziona.

*Ihagee*

## **IHAGEE (JR) - #413629 - DETAILS**



As you can see the camera is in nice condition, the curtains are fine and the leatherette is very good everywhere.



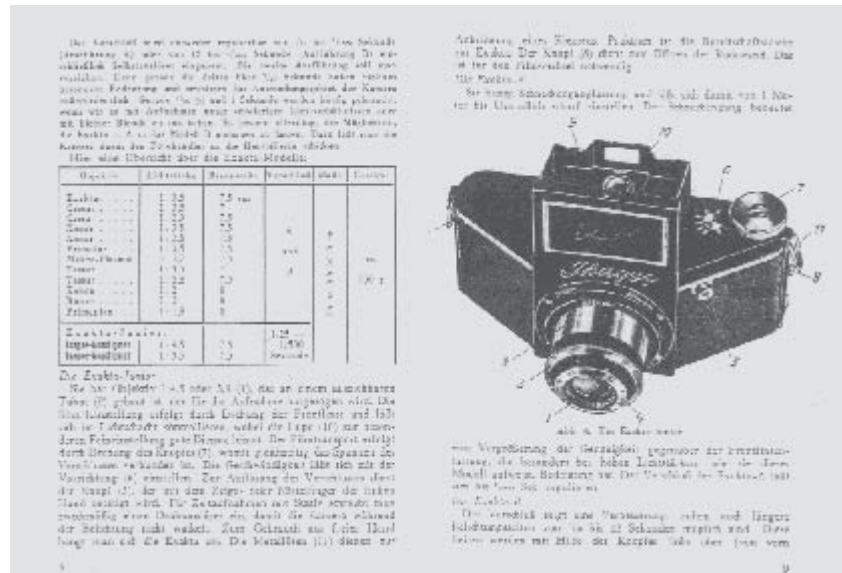
Come potete vedere la macchina è in belle condizioni, le tendine ottime, la finta pelle perfetta dovunque.



# IHAGEE (JR) - CLASSIFICATION

I am a lucky collector. Mimmi Zucco (a wellknown Italian dealer and collector) sold me a VP Night, in very fine condition. Few days later he called me an he told me that an English dealer had an Exakta Jr (marked Ihagee) for sale. I replied immediately "Buy it for me, don't discuss about the price". A week later I had it at home (#413629, lens Ihagee 611169), together with the first one (#413561, lens Ihagee 611129 then sold, as I promised to do, to a friend collector), out of the small initial first batch of perhaps at most 50 cameras as you can read on the following letter from the late Stein Falchenberg:

*"You should be very pleased to have got one of the rare and little known Ihagee Jr. cameras. I have known of these cameras for many years... Most if not all that has been written in modern times have ignored this camera, but interestingly it is illustrated as the Junior in Gerhart Isert prewar "Standard" Exakta book. Even Hummel in his new book refers*



*only to Exakta Jr. Anyway it is quite clear that the original model was called Ihagee Jr, and I have a group of 4 serial numbers between 413522 and 561, a small initial batch of perhaps at most 50 cameras. Then one at 418888 and surprisingly a sole Exakta JR AT 419059, and then the first batch of Exakta Jr from 429362 to 430270, say 1000 cameras. It may be significant that the sole early Exakta Jr which appears to be of the same batch as the last Ihagee Jr was in USA. Perhaps the US importer insisted on the camera being Exaktas?"*

I never had the Hummel's book simply because I do not understand the German language. There was the idea of translating this book in English, I think that Thomas Ackermann begun with Exakta pages.

Body N.	Lens N.	Owner	Bought	cover	prod. date
413424	606071	MU	US	no	*
413493	606089	RD	D	no	
413518	607411	CT	I	no	10/01/33
413522	607451	MK	NL	no	
413551	607433	HR	NL	no	
413561	611129	GC	UK	yes	10/03/33
413598	607455	MR	US	no	
413629	611169	MF	UK	no	??/??/33
413632	611174	KR	US	yes	
413634	611149	AD	UK	-	
418888	-	KC	UK	-	
Body N.	Lens N.	Owner	Bought	cover	date

**Ihagee Jr Classification**

Few of them were made. In the upper table you can look at the list of the survived Ihagee Jrs.

Here you can find the body number, the lens number (all lenses are Ihagee Anastigmat ), the owners, where the cameras were bought and, where you read yes or not, yes means that there is the red window sliding cover on the back. On the last column the day of assembly (you can read here after the article by Gary Cullen).



# IHAGEE (JR) - SOMETHING ABOUT

**This is the message received by Miles Upton, who owns the earliest camera 413424:**

I notice two (or perhaps 3) things which are different from the other Ihagee Jr.'s (but I don't have your experience with these rarities).

**1.** - No Sun and Moon on the hood (like an early A). Perhaps the factory used no Sun and Moon logo on the early Ihagee Jr. since there is already one engraved on the front plate of the camera?

**2.** - No guide or locking feature on the lens when pulled out. On the Exakta Jr.'s that I own, you pull out and turn to lock the lens in place. This camera has no lock or guide mechanism to prevent the lens tube from rotating. The tube will rotate 360 degrees even when collapsed. Perhaps this is the original design of the Jr. and the factory realized the difficulty of using a lens without a tube that locks into place? I think the problem was fixed very fast.

I'll inspect the lens mount to see if this feature is original (or perhaps a part is missing) when I disassemble the camera to find the mirror date.

**3.** - Location of serial number on the lens mount.

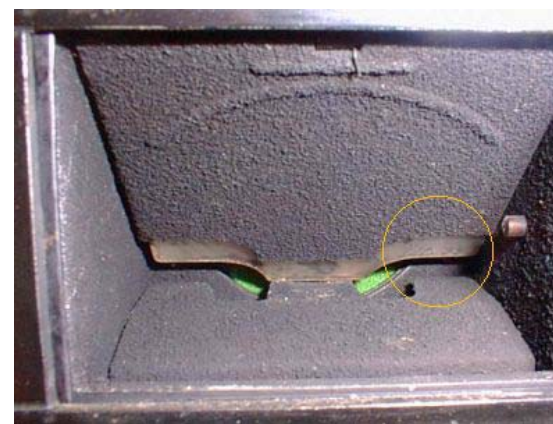
**Instructions for checking mirror dates on the Ihagee Jr (and others)  
(received by Gary Cullen, 12.02.1999)  
Good luck and BE VERY CAREFUL!**

It's been found that most of the prewar Exaktas have dates written in pencil on the back of their mirrors. This could lead to a lot more knowledge of prewar Ihagee cameras in regards to production if we collect enough numbers over time. Most dates are hand printed on the lower back edge of the mirror and can be seen by sliding the mirror down a



few millimeters. If the mirror has been replaced then there will likely be nothing there. Some cameras have the date written higher up on the mirror and that requires a full disassembly of the camera to remove the mirror. It's not known for sure what these dates mean but it is believed to be very close to the date of manufacture. If anyone has any

further information about this please contact us! PLEASE: only attempt this if you are confident you can proceed without damaging your camera! If you do not want to attempt this yourself but want to know if there is a date on your mirror I would recommend giving the camera with these instructions to a qualified camera technician.



This is for the Ihagee Jr but is similar for most other VP Exaktas as well.

**1.** - remove the 4 front lens mount screws and remove the lens assembly.  
**2.** - set the shutter to "Z" and open the shutter, to release the shutter you will have to press down on the shutter lock release, it's the piece of thick wire sticking out of the bottom of the mirror

box just under the light baffle plate. (easy to see)

**3.** - pull the mirror back to its down position with your finger, it will stay there. (it will not damage the camera)

**4.** - lift tabs on either end of mirror (see photo)  
**5.** - use the hook to pull the back of the mirror down about 5mm

**6.** - look through the back at the exposed bottom edge of the mirror glass and check for a date. The camera in the photo has the number on the bottom right edge (as viewed in the photo) and it's 3/10/33. The serial number of the camera is 413561.