

Exakta JR (C), 1936 - #470030

Exakta Jr.
470030
470030



If you look at the front of this camera you can classify it as a Exakta Junior. But if you look at the back you can find the "C" back. A distance ring is needed and you look for it. You find it. So this camera is not the usual Jr. It is a very rare camera. You can find more information on third page of this pdf. The camera is in very nice condition.



Se date un'occhiata al frontale di questa macchina la potete classificare come Exakta Jr. Ma se date un'occhiata al dorso scoprirete che è una "c". Allora cercate l'anello distanziatore e lo trovate e così scoprite che si tratta di una macchina davvero rara! La macchina funziona bene ed è in buone condizioni.

EXAKTA JR (C) - #470030 - DETAILS

Exakta Jr.
470030
470030



As you can see the height of the thread is so high to use the distance ring, while on other Jrs this is impossible (my opinion: this means that the lens was made expressly for this camera).



Date un'occhiata all'altezza del filetto. E' sufficiente per inserire l'anello distanziatore, mentre nelle altre Junior è impossibile. Il che significa che l'obiettivo è stato fatto per questa macchina



EXAKTA JR (C) - SOMETHING ABOUT



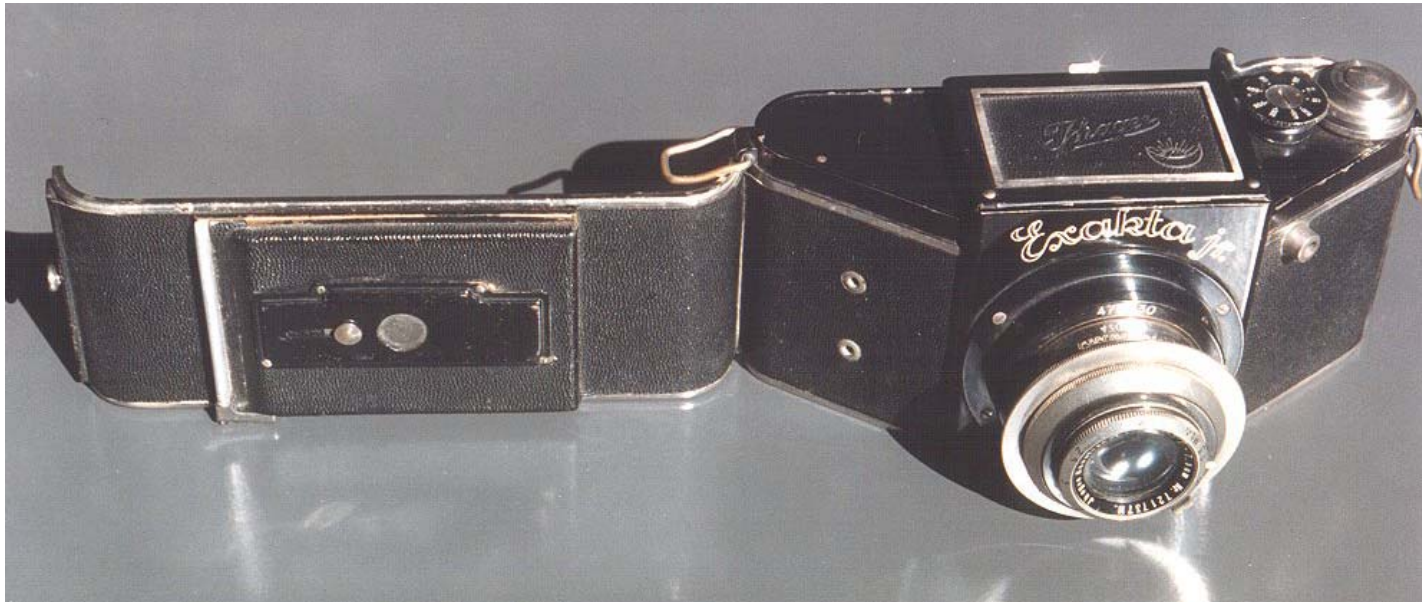
As you can see, this camera this camera is a Junior, version 2, as you can see on *Aguila & Rouah* book. The back is the same of the C. The ring has the same body number, and the engraving is like that of other Cs I own.

Some years ago the late Stein Falchenberg was making a research on the early Exakta VP and was collecting information. I sent him the photos of this camera and of the Ihagee Junior. A few days after he replied : "... Regarding your Jr with plate back, it is certainly the

The unique Junior C Original Junior leatherette, C back, numbered distance ring..

A never heard camera

Everyone of us knows the Exakta Junior, few of us knows the Ihagee Junior, but nobody knows the Exakta C. I bought it by [Jay O. Tepper](#), USA, when he was in West Hartford.



only one I have heard of. It has been normal to refer to cameras with plate back as model C. It turns out that this concept is

wrong. Hummel asked me last winter if I had ever seen any reference to factory literature referring to Model C. After

much searching it became clear that it was essentially an English language term, seemingly created in 1937 by UK importer. It is

now clear that plate backs could be fitted on any camera, being an option more like a lens, although one would have thought not on

Jr, as it would seem impossible to adjust the spacing, I notice that you don't show a ring. (The photo I sent him was

that with the open back, so He did not see the ring).

Therefore presumably the infinity focus is correct with the plate back, but the camera may not be used roll film as this requires the spacer. The camera fits into a batch of Jr, perhaps a little more than 100".

If you ask to Douglas St.Denny, the Editor of *Camprice.com*, he knows that this camera was referred him by a wellknown collector (I think to remember he was Myron Wolf) This is the only one I found during years.